



Tapibel

Your carpet, our tradition

Sustainability & design go hand in hand

We know the world of carpet like the back of our hand and have been true carpet masters for over fifty years. **Sustainability and ecology** are of paramount importance to us. By **making our carpet production greener**, we are working towards a greener planet. For example, we use a **latex-free adhesive** in many of our collections. That way design and sustainability go hand in hand.

Discover our sustainability initiatives and get inspired by our latest, unique carpet designs with **ECONYL®**.



Twise: sustainable initiatives for a greener planet



Our carpets and our approach fit into today's world, as we are committed to ecology and sustainability. We are always looking for ways to make our carpets and carpet production more sustainable and ecological. We make this promise a reality with concrete **ecological solutions for a more sustainable modus operandi.**

Discover Twise, Tapibel's sustainability brand.

Why Twise?

1. Tapibel is "wise" to produce greener carpets.
2. All sustainable solutions contain recyclable material. We give it a second (and third, fourth, ...) life.

The result?

A more sustainable and ecological carpet, from the yarn to the backing.

As a family business, we also think of the next generations. Thanks to these adjustments, they too can enjoy a greener world and greener carpet.

Ecofuse

The adhesive



Ecofuse is our **ecological alternative to the traditional latex adhesive** compound in both wall-to-wall carpet and carpet tiles. We replace the latex by a sustainable, post-consumer product called PVB (PolyVinyl Butyral), extracted from used car windows and laminated building glass.

The benefits



of sustainable origin



non-toxic



futureproof



The switch to PVB results
in a latex reduction of
500 tonnes!



Scan the QR code
and discover the PVB
production process!

Ecofuse in our carpets

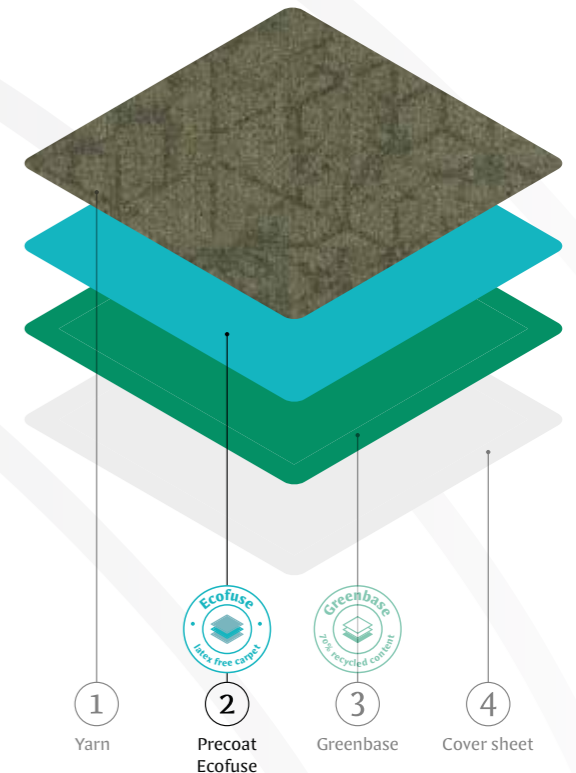
At Tapibel, we use Ecofuse in many of our carpets. Both in broadloom and in carpet tile.

Precoat

The first adhesive layer between yarn and primary backing, to ensure that the yarns bond firmly.

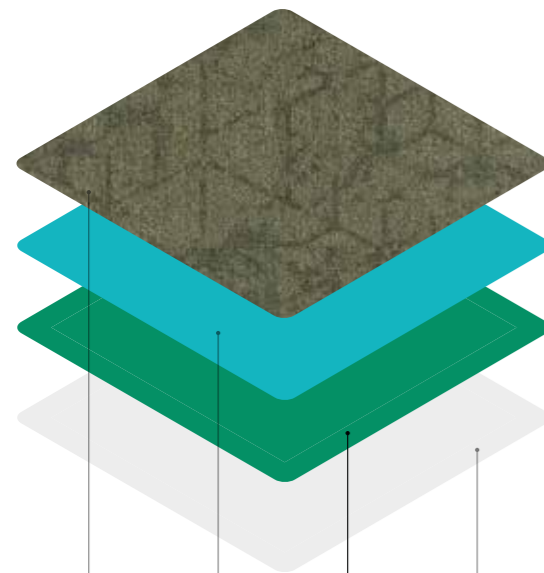
Secondary backing

A second adhesive layer is applied to glue the action or felt backing onto the actual carpet. This final process ensures that the broadloom carpet obtains more body and rigidity.



Greenbase

The modified bitumen backing



1

Yarn

2

Precoat
Ecofuse

3

Greenbase

4

Cover sheet

Greenbase, short for modified bitumen, is a more sustainable solution for carpet tile backing. It consists of **70% recycled materials** (diverted from a waste stream of the limestone mining), which makes it less harmful to the planet. Greenbase guarantees both dimensional stability and strength in the final product.

70%
recycled
materials



ECONYL®

The yarns



The yarns of several of our collections are made of ECONYL®. The material is made of **100% renewable Polyamide 6 or nylon**. ECONYL® has exactly the same properties of standard nylon with a more durable edge: it can be regenerated indefinitely without loss of quality.

By reusing the materials, the ECONYL® yarn contributes to a **circular economy**.

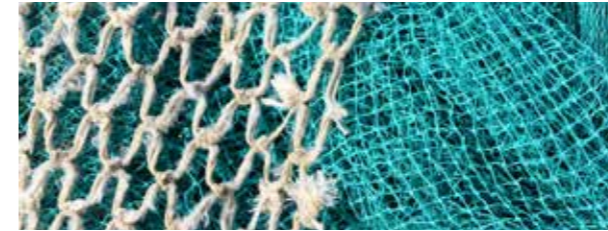


Currently, **25%** of the yarns we use in production are ECONYL®.



Compared to virgin yarns, the **CO2 emissions** of ECONYL are reduced by **90%**.

The regeneration process of ECONYL®

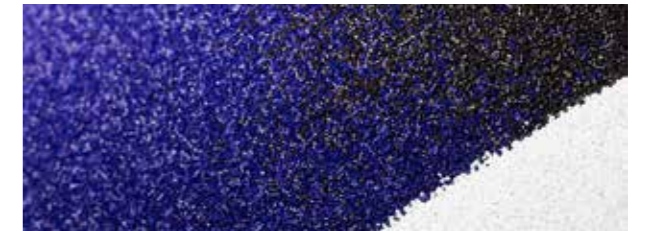


1. Rescue

We collect waste (fishing nets, dust scraps, old carpets, etc.). The materials are cleaned and sorted.

2. Regenerate

After a thorough regeneration and purification process the nylon waste is returned to its original state. The raw material now consists of pellets and dispersions.



3. Remake

ECONYL® regenerated nylon is processed into yarns and textile.

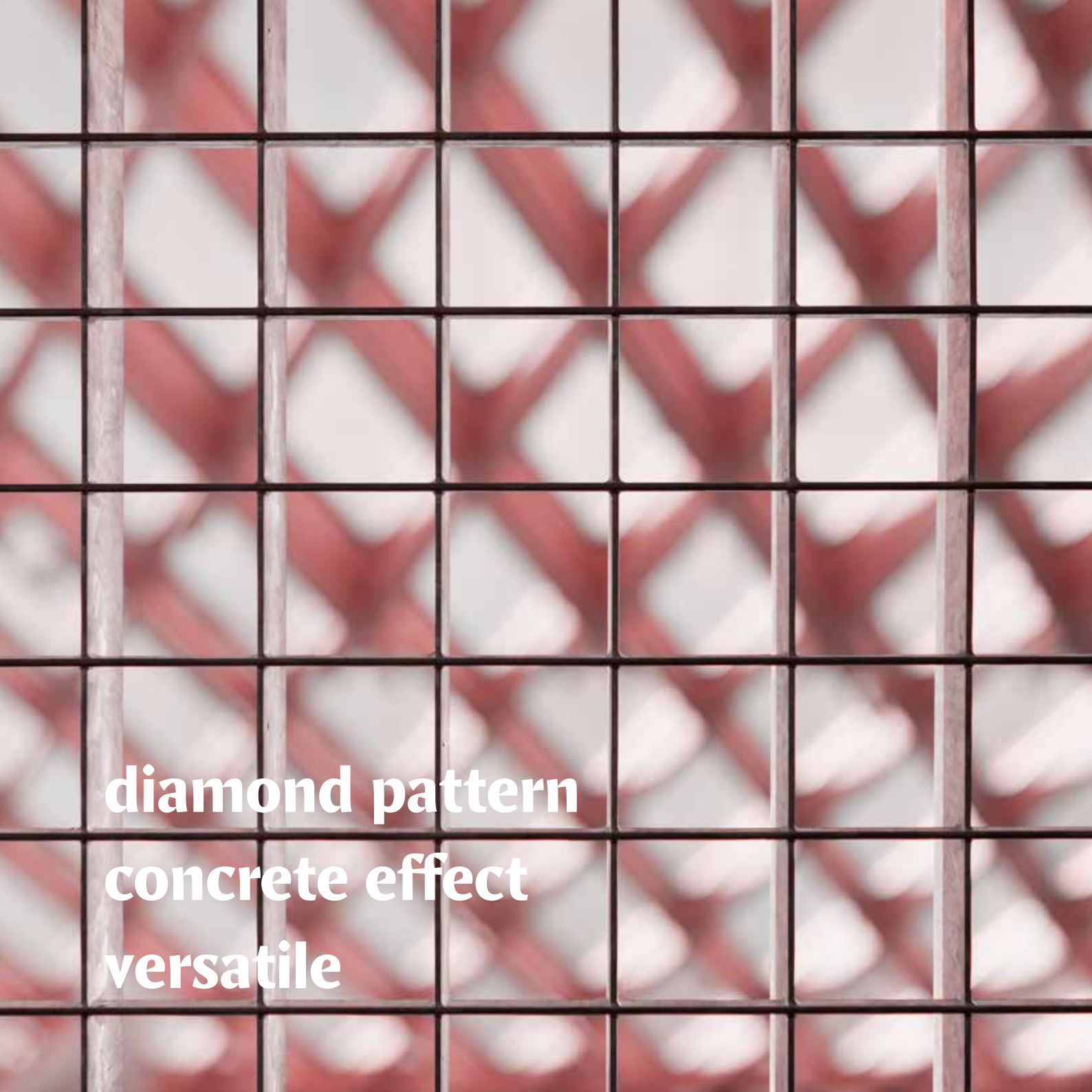
4. Reimagine

With this new yarn, manufacturers such as Tapibel can get to work. We create new ECONYL® carpet collections.



**Sustainable
Econyl
Design
Collections**





diamond pattern
concrete effect
versatile

Diamond art

The brand new Diamond Art collection is part of our ecological modular design concept. Diamond Art combines a **geometric design with a sleek concrete effect** that draws your eye to the floor. The trendy pastel colour bank gives every modern interior a tough and innovative look, both in hotels, offices and in public spaces.

Our inspiration

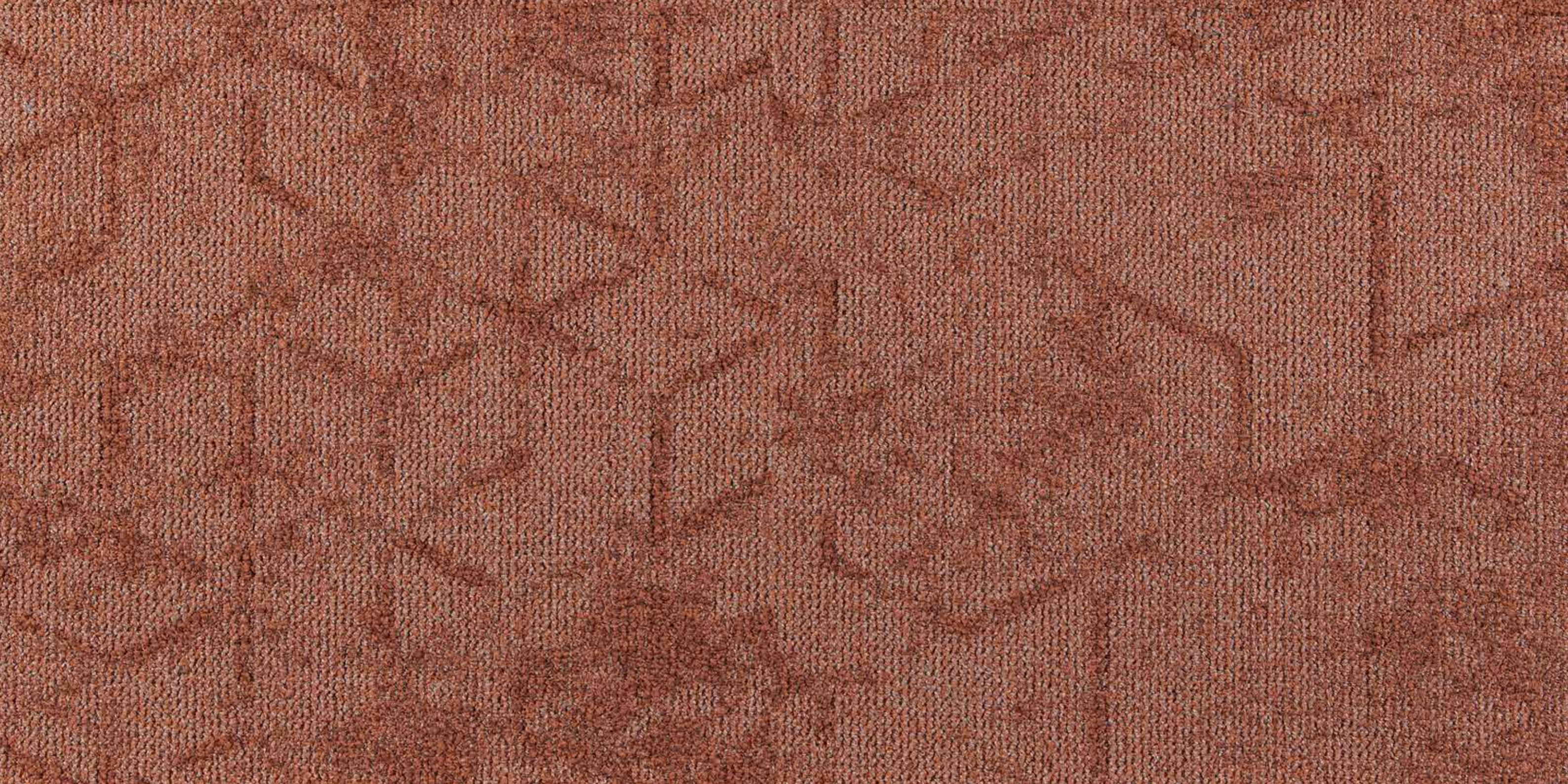
The green theme colour reinforces **the connection with nature** in commercial environments. It increases the **importance of ecological thinking** and sustainability in soft floor coverings. Additional properties are better acoustics, extra insulation and exquisite underfoot comfort.

Diamond Art products allow interior designers to design creative floors and incorporate countless colour combinations into the end customer's interior.

The collection is available in 12 different colours. Choose a neutral colour to integrate the carpet in a striking design or let the carpet speak for itself with an eye-catching shade. How about soft green to bring nature indoors?

Available in wall-to-wall carpet (4 m) and carpet tiles (50x50 cm). XL tiles (50x100 cm and 100x100 cm) are optional from 200 m².





Nature calling



Pantone
15-0343 TCX
Greenery

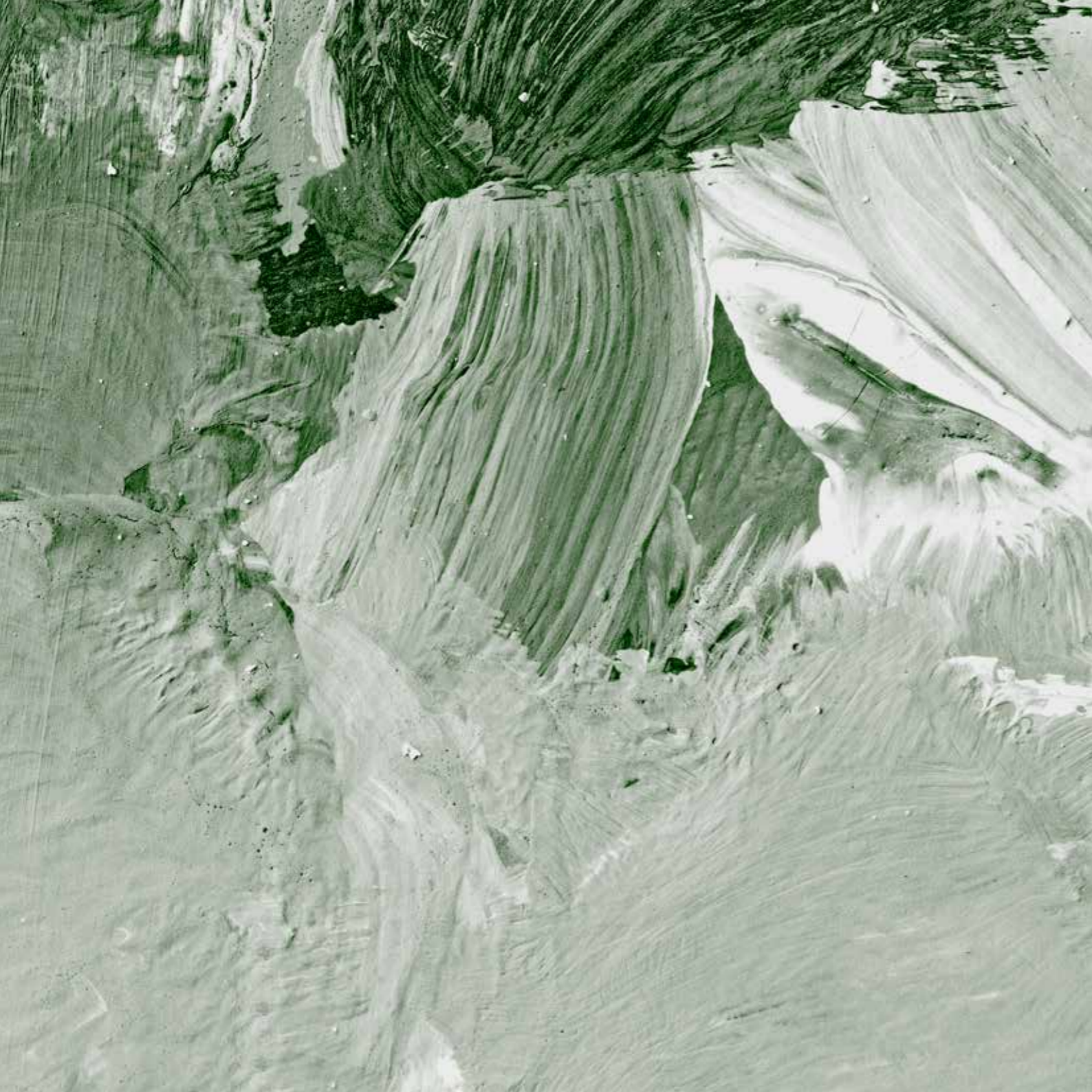


Diamond Art 64670









expressive
natural
paintbrush pattern

Shoreline

Shoreline is a **bold and expressive design**. The ship's wood or paintbrush pattern catches the eye and won't let you go. The markings on the carpet create an interesting flooring concept in any office or hospitality environment.

Choose warm, natural shades to add cosiness to any space. Or go for a fresh, colourful colour to make a statement.

Available in wall-to-wall carpet (4 m) and carpet tiles (50x50 cm). XL tiles (50x100 cm and 100x100 cm) are optional from 200 m².





Picturesque seaside



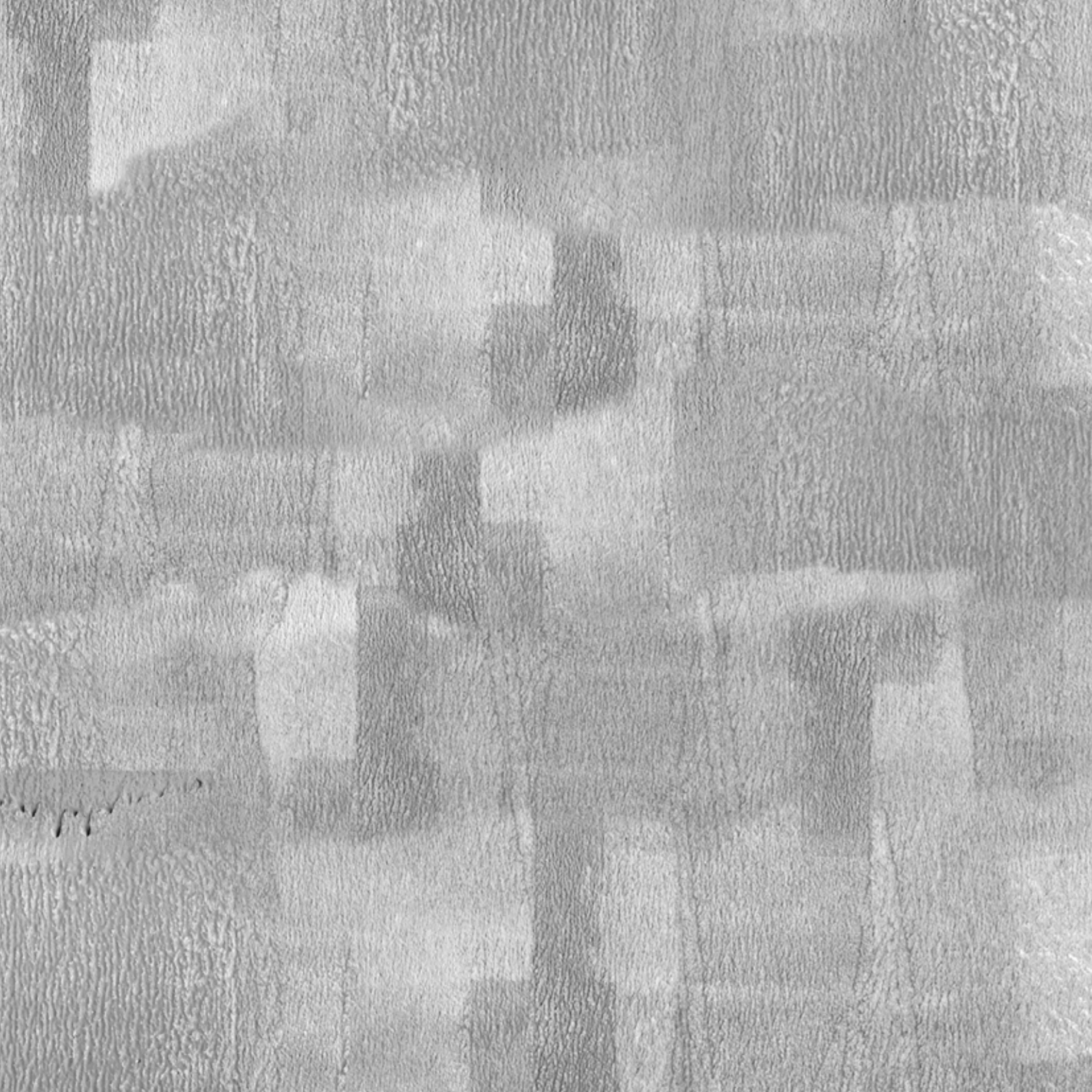
Shoreline 65042



Pantone
14-1315
Hazelnut







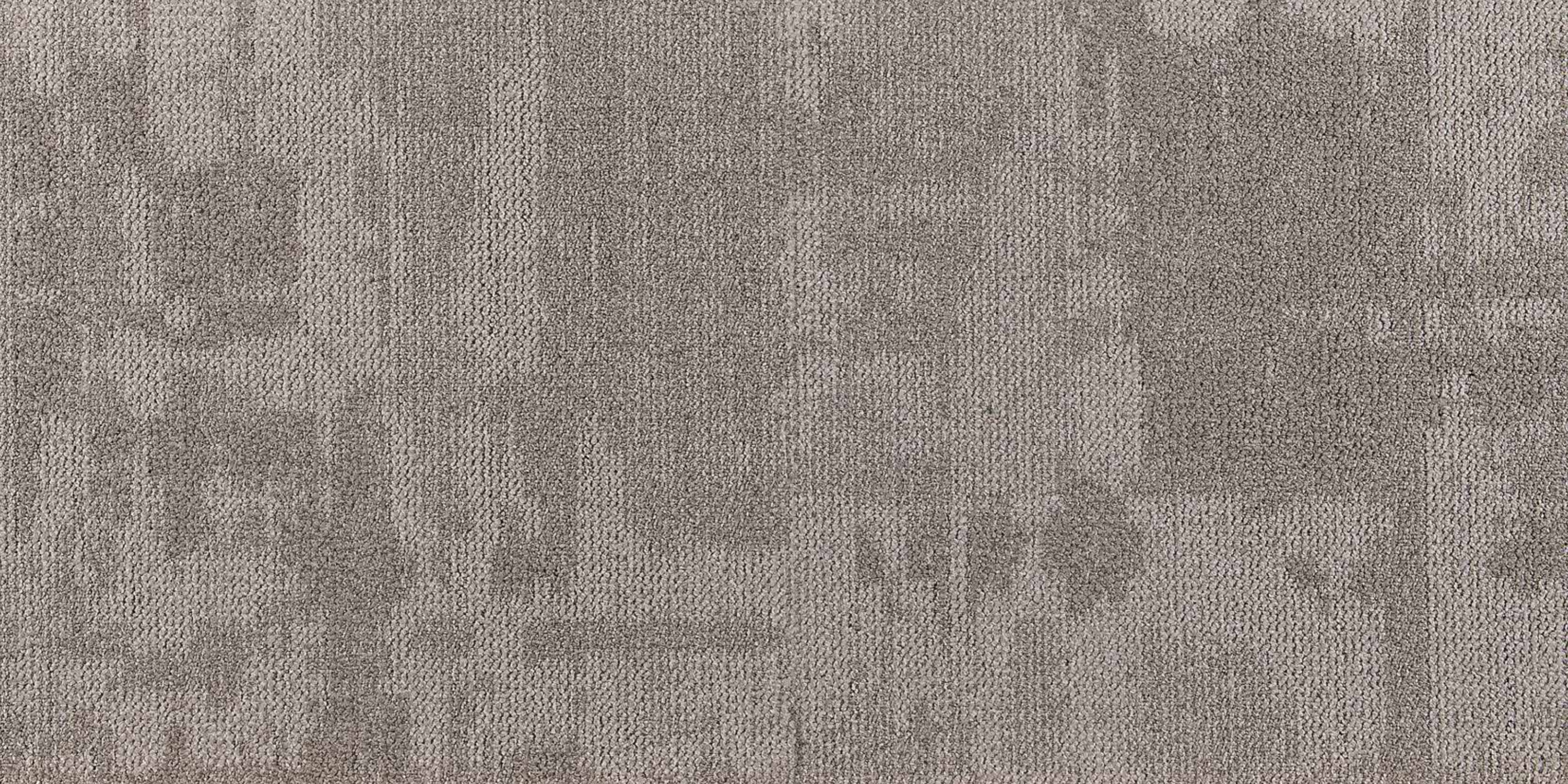
original
random pattern
tough

Urban Textures

Urban Textures has a **special crisscross pattern** that can be used in any direction. The pattern creates the illusion of texture on the floor. The collection makes a statement in both hospitality settings and office spaces. Colour outside the lines with the sturdy design of Urban Textures.

Available in wall-to-wall carpet (4 m) and carpet tiles (50x50 cm). XL tiles (50x100 cm and 100x100 cm) are optional from 200 m².





Gritty blueprint



Pantone
318 CP
Turquoise



Urban Textures 64942







minimalist
timeless
tweed pattern

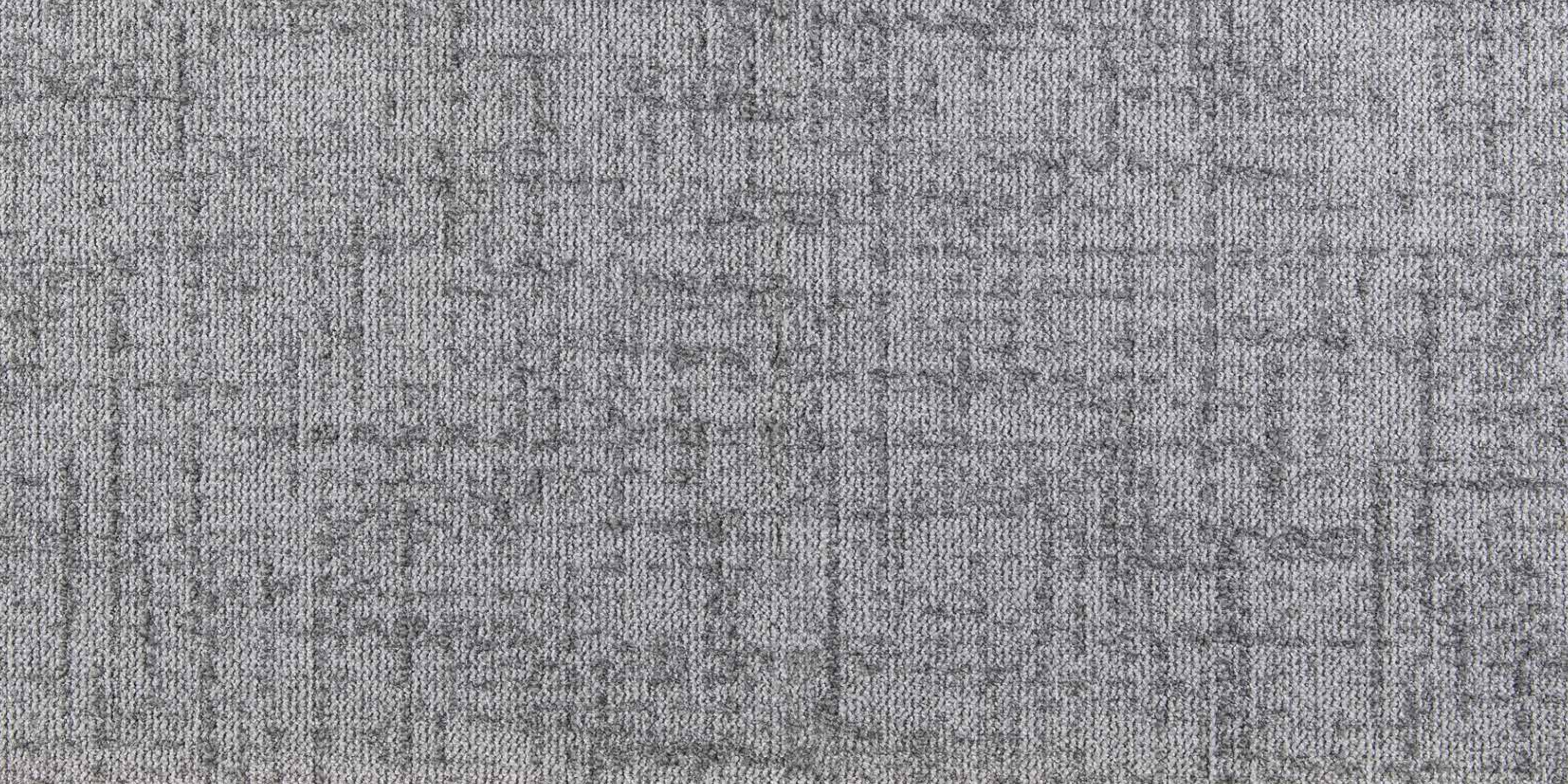
Artisan Tweed

Artisan Tweed has a **minimalistic yet timeless design**. The Tweed pattern is reminiscent of the famous Chanel design. Artisan Tweed is subtle and fits into any modern interior. This collection is a gem in any setting, from an office space to an entrance hall and a hospitality environment.

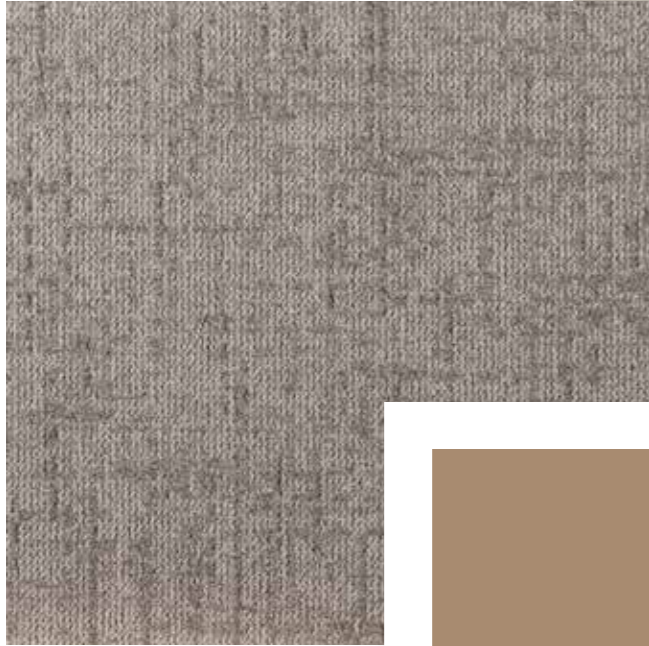
From light beige and grey tones to darker colour options. The choice is yours!

Available in wall-to-wall carpet (4 m) and carpet tiles (50x50 cm). XL tiles (50x100 cm and 100x100 cm) are optional from 200 m².





Serenity



Artisan Tweed 64821



Pantone
17-1220 TSX
Affogato



Artisan Tweed 64830





The added value of carpet

Impact sound reduction
26 dB

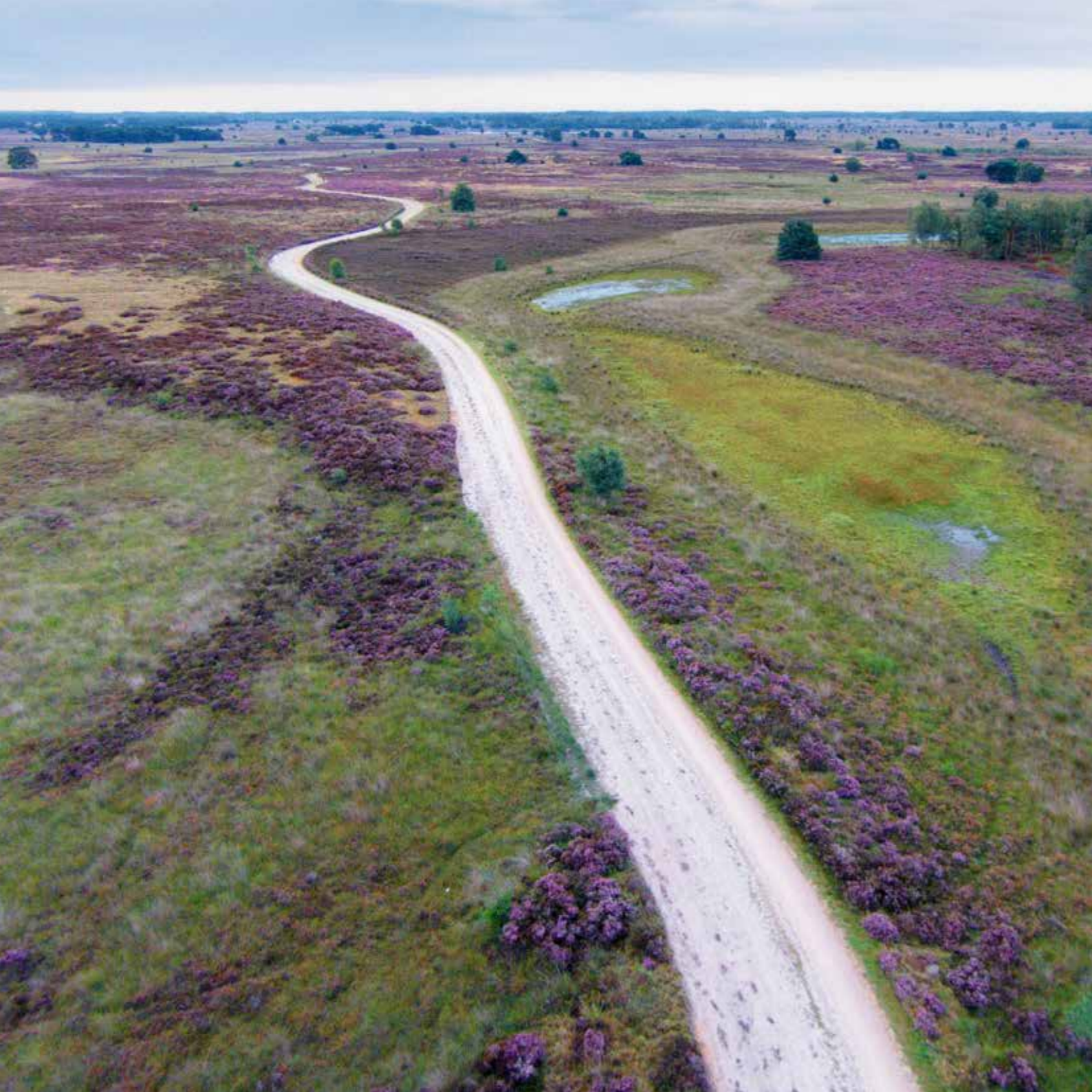
Sound absorption
0,15



A decent floor covering is a must in every (office) space. **Relax and work in complete silence** thanks to the **sound-absorbing properties**. Enjoy a **pleasant temperature** throughout the seasons thanks to the **insulating effect of carpet**. These assets boost **concentration and productivity**. Comfort is perhaps the greatest benefit. Bringing underfoot **comfort and luxury to the workforce**. Treat yourself and your employees and choose carpet in your office or hospitality area.

The colour in carpet flooring offers other benefits. The right use of colour enhances performance and boosts concentration. At Tapibel, we are fully aware of this. The 12 light colours in the Diamond Art colourbank contribute to a more relaxed and upbeat environment.





Thanks to our **sustainability** initiatives and **ecofriendly** collections, we are actively working towards a circular economy. **Together we make our carpets and the planet greener!**

Inspired by our **ECONYL®** Designs? Contact Tapibel to discuss the possibilities or to place an order! Do you have a question about our collections or sustainability initiatives? Then you can of course contact us for more information.

www.tapibel.be
sales@tapibel.be

Tapibel
Your carpet, our tradition